

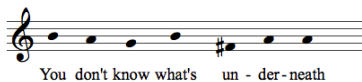
Pond Song

Timothy Cape

If possible, the performer should be hidden somewhere in the vicinity of the pond as the audience assembles, and should cross to the other side of the pond during the performance, and run off into the distance, still performing, to finish. (Come back to bow!)

Imagine A,B,C,D and E are happening simultaneously on 5 different radio stations. The performance is a playing out of the radio stations from the perspective of someone continuously (sometimes impatiently / frequently changing, sometimes pausing for longer on each station) flicking between the stations.

The audience shouldn't have heard all stations until towards the end of the piece, and should only hear two of the stations for the first third of the piece. Singer can transpose notes if desired.



A -

Improvise with this melody.

Play with rhythms, articulation and rearranging of notes.

The audience shouldn't hear / understand the full sentence until halfway into the piece.

B - Physically embody a swan in silence.



C - Improvise with these notes. A different character to (A) - more restrained, with more longer notes. Could be contemplative or serene, another time

D - Play out all or part of this scene from Batman. Study the scene carefully and include elements such as batman's crouch on the wall, both character's facial expressions and voices, and the cheesy action music.

"Wait - you could die! - at least tell me your name.

It's not who I am underneath, but what I do, that defines me.

Bruce!?

**jumps of wall* *cheesy action music* "*

E - impersonate the comedian from youtube search: "you don't even know!" Including holding an imaginary microphone, the way he turns around each time, the way it becomes more intense / differently articulated as it goes on.

